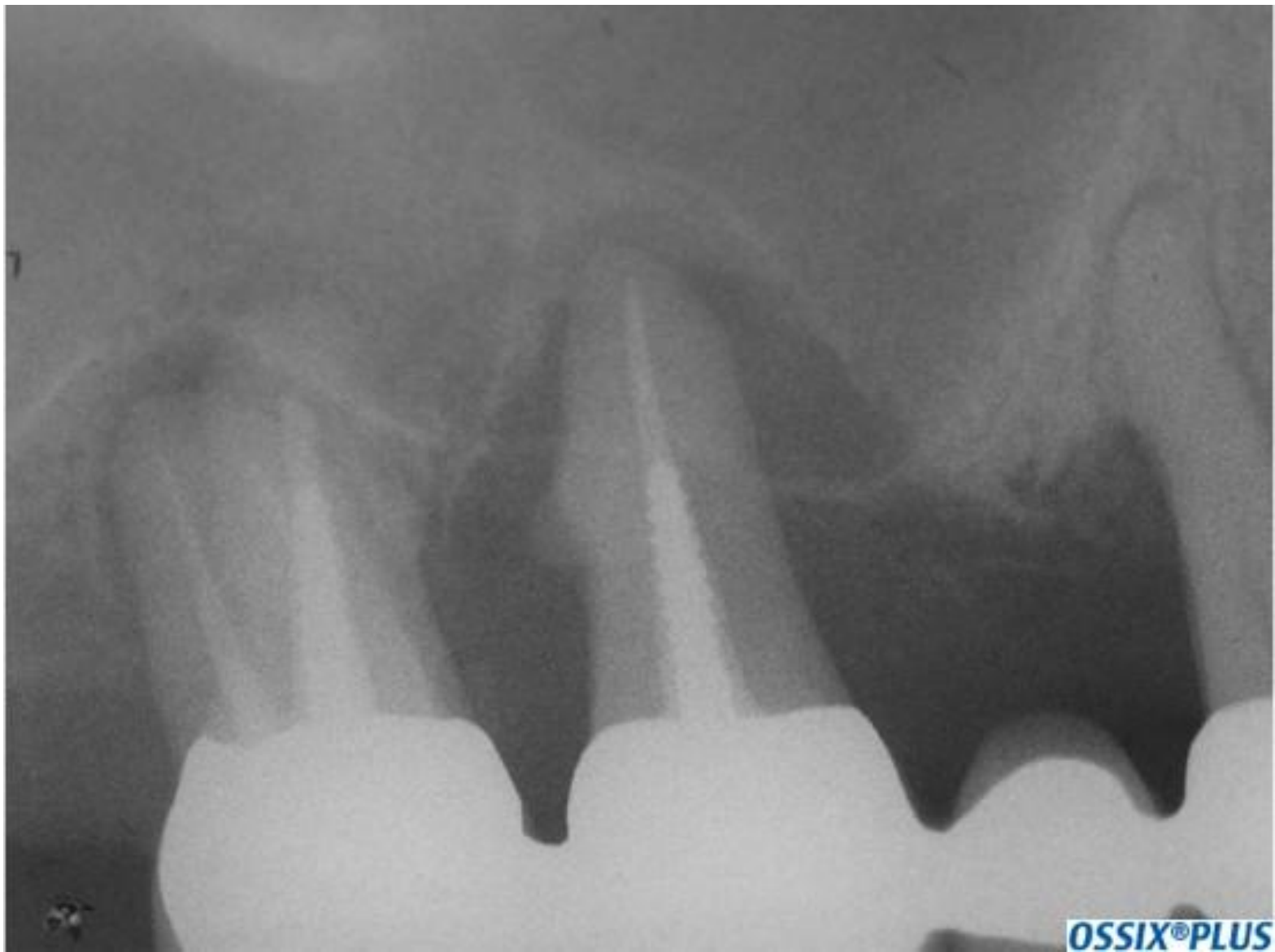


OSSIX® PLUS Case Presentation #1

Female, age 54 with Advanced Chronic Periodontitis.

Teeth #2,3,5 were extracted and immediate implants placed with osteotome sinus elevation. Horizontal and vertical bony defects were augmented with bovine bone mineral and OSSIX® PLUS. Five months post-op at second stage surgery, the tissue over implants' cover screws was removed and taken for histological evaluation.

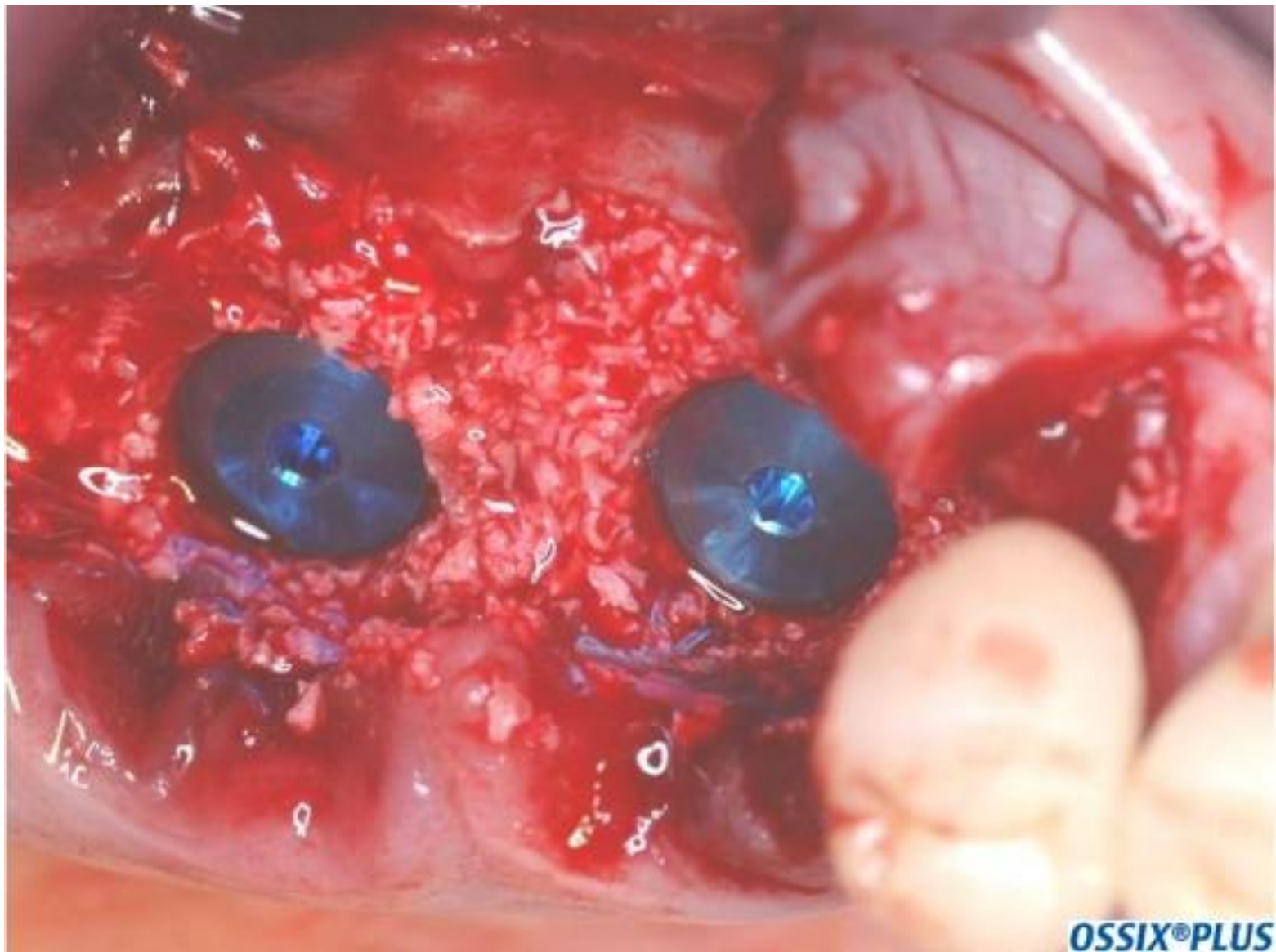
Clinical photography used with permission from Dr. Yuval Zubery, Israel.



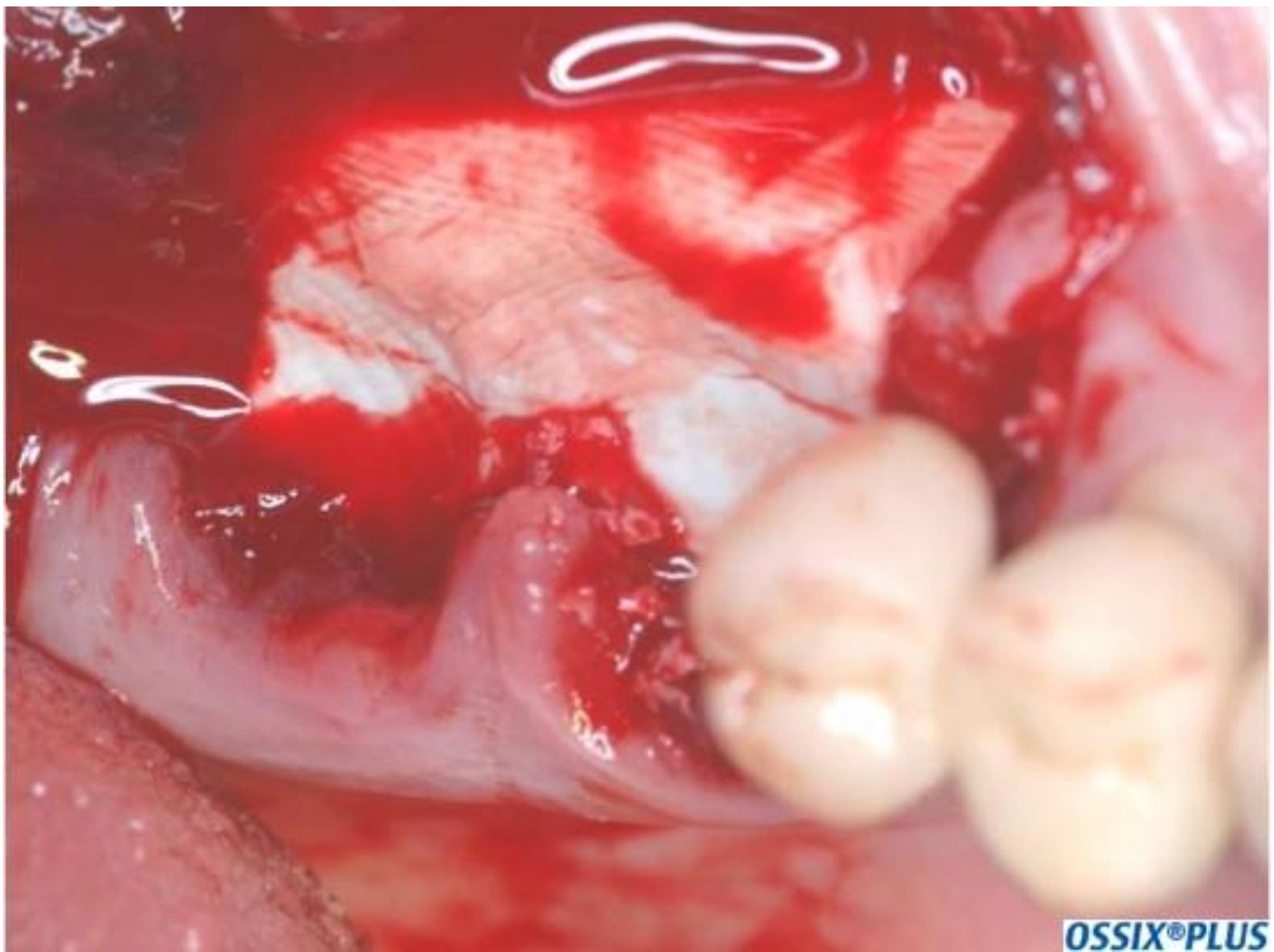
Pre-op clinical and radiographic photos, with severe bone loss around the three teeth.



Pre-op clinical and radiographic photos, with severe bone loss around the three teeth.



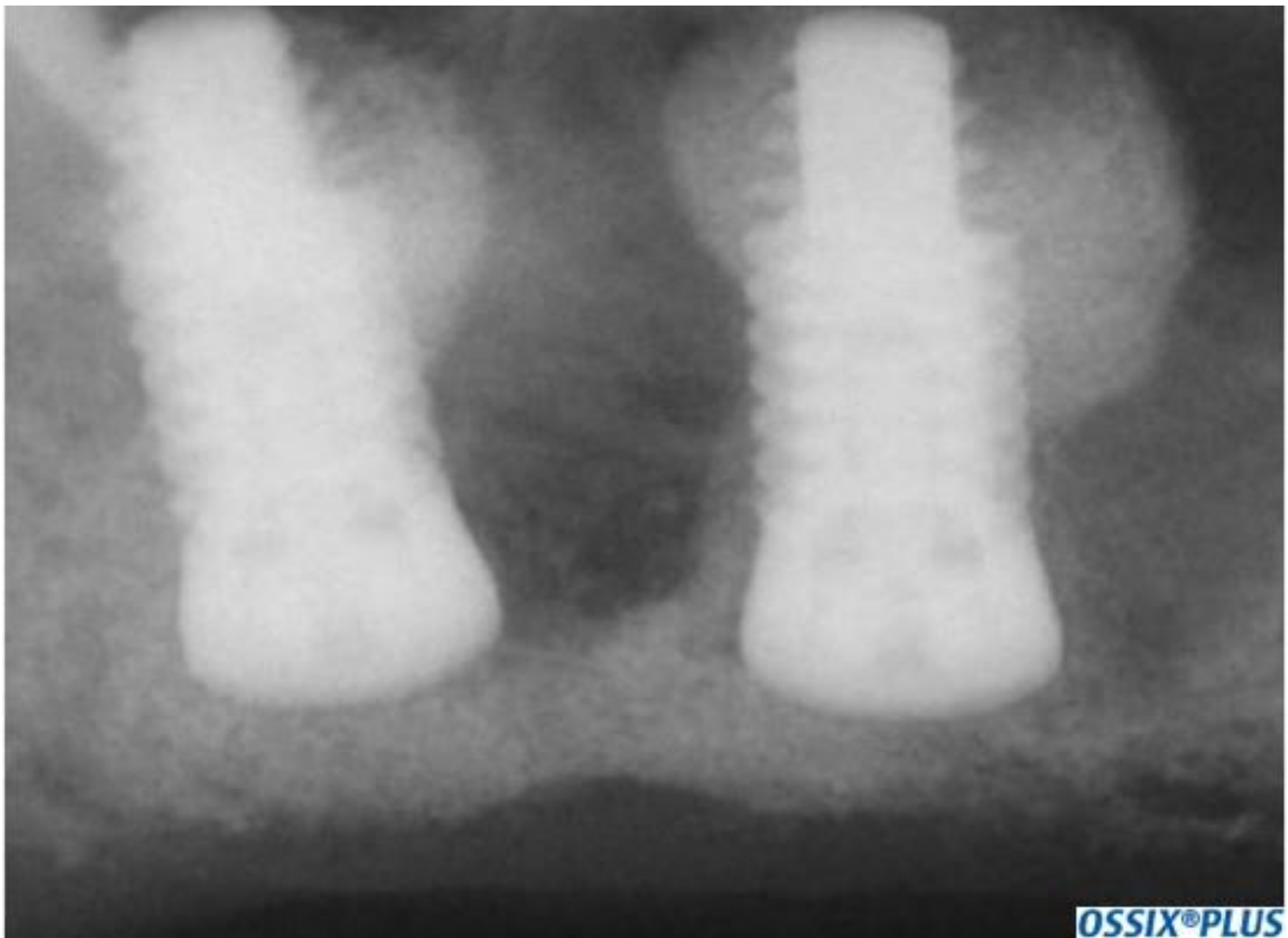
Following extractions, three implants are placed with osteotome sinus elevation with bovine bone mineral.



The augmented site covered with OSSIX® PLUS.



Primary closure with 6-0 nylon sutures.



Five months later at second stage surgery radiographic evidence of complete coverage of implants with bone graft.