

OSSIX® PLUS Case Presentation #4

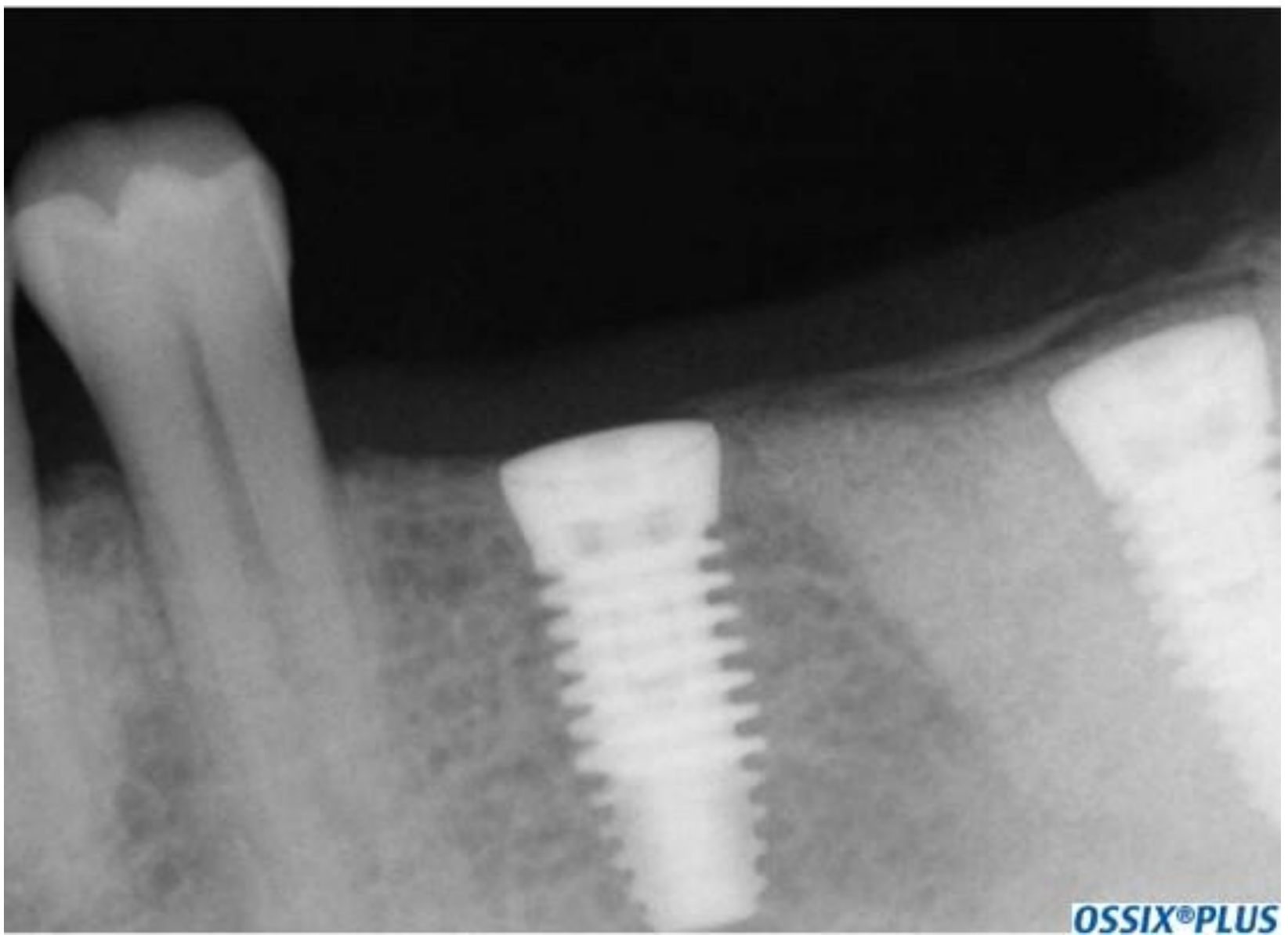
A 65 years old male with Chronic Periodontal disease and teeth #17,18 with severe bone loss.

The teeth are extracted and 2 implants placed in the position of teeth # 18,19. The extraction site is augmented with bovine bone mineral and covered with OSSIX® PLUS. After 5 months periapical radiograph reveals complete bone healing and a thi radio opaque layer over the augmented site. At second stage surgery, the membrane is intact and removed to uncover the implant cover screw. A photo-micrograph shows an intact membrane and dense bony layer under and over the OSSIX® PLUS membrane.

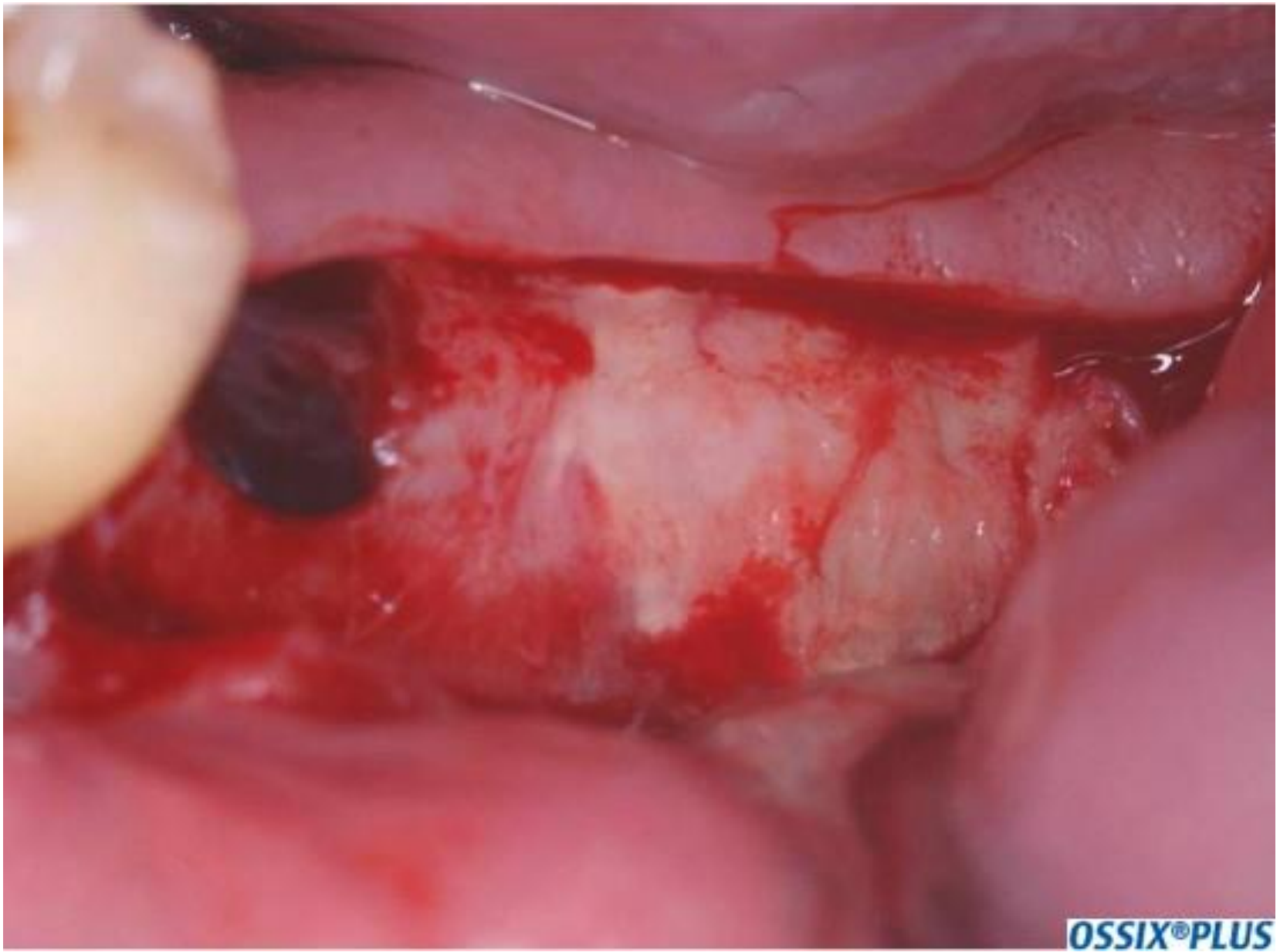
Clinical photography used with permission from Dr. Yuval Zubery, Israel.



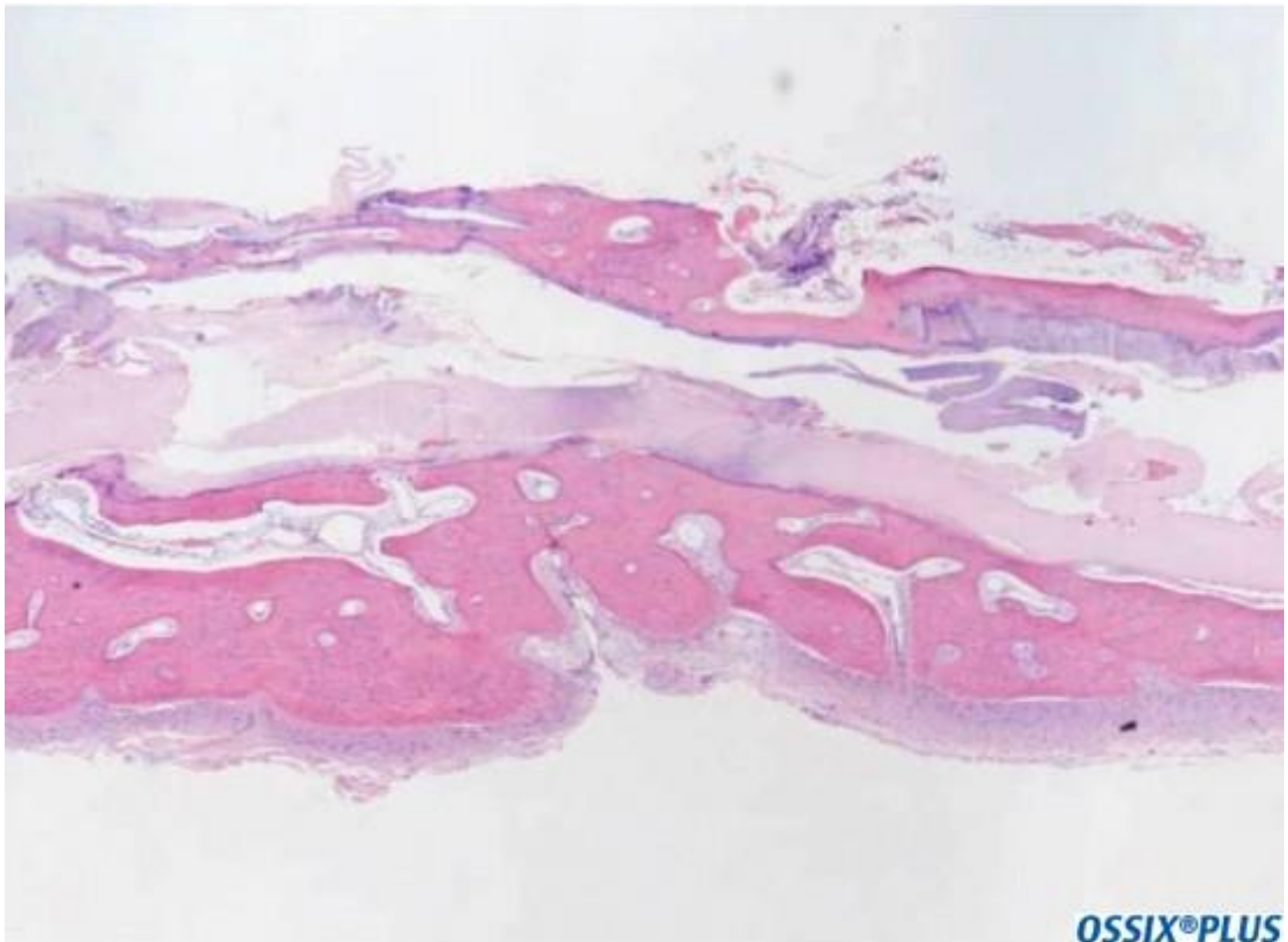
Pre operative radiograph showing severe bone loss in teeth #17,18.



Radiograph after 5 months with complete bone filling of the defect and evidence of thin radio opaque layer over the augmented site.

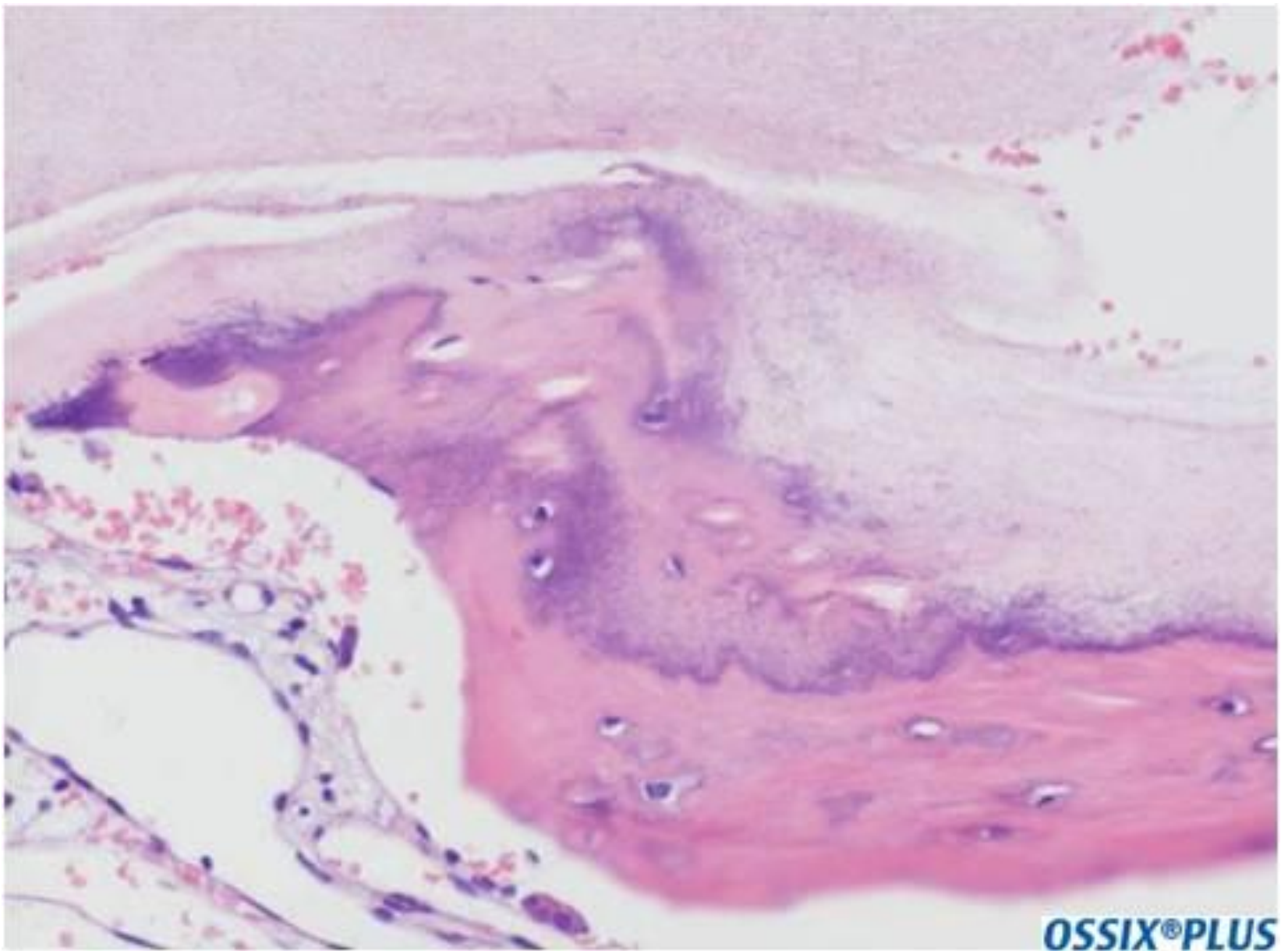


Clinical photograph of intact OSSIX® PLUS membrane covering the augmented site.



OSSIX®PLUS

Photomicrograph of the tissue removed from over the cover screw. The membrane is intact with dense new bone under and over, as well as, inside the membrane.



OSSIX®PLUS

Photomicrograph of the tissue removed from over the cover screw. The membrane is intact with dense new bone under and over, as well as, inside the membrane.