

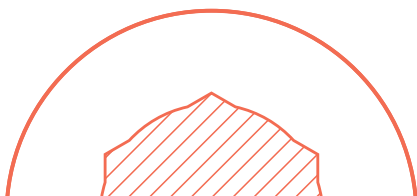


Simplicity made accessible.



InternalFIT™

HA Professionals
for Professionals





Simplicity made accessible.

Bringing everyone the possibility to smile, the **NUVO™** Implant System is designed to offer reliability based on proven concepts with simplicity, versatility while offering affordability.



Global Implant brand

In more than 50 countries



Proven technologies

With more than 500 scientific articles



Accessible therapy

Affordability and convenience in implant treatment

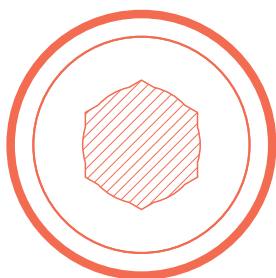
InternalFIT™

The **NUVO™ InternalFIT™** features the proven internal hex connection in a naturally tapered body design maximizing treatment versatility and simplicity in all bone types. The **NUVO™** Implant System offers a comprehensive prosthetic portfolio covering all indications.



Proven

The **NUVO™ InternalFIT™** combines proven concepts in dentistry: the well-established internal hex connection, titanium grade 4 commercially pure (CP) and the well documented sand blasted and acid etched surface treatment.



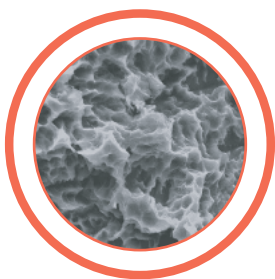
Internal Hex Connection

NUVO™ InternalFIT™ is designed to allow a perfect fit between the implant and abutment, as well as featuring the platform-switching concept. It combines an anti-rotational engagement trough a deep internal hexagon and a reduced abutment diameter seating on the implant platform.



Pure Titanium Grade 4

NUVO™ Implants are produced out from the most commercially pure and mechanically strong titanium grade 4 (Ti gr4 CP).



Sand Blasted & Acid Etched Surface

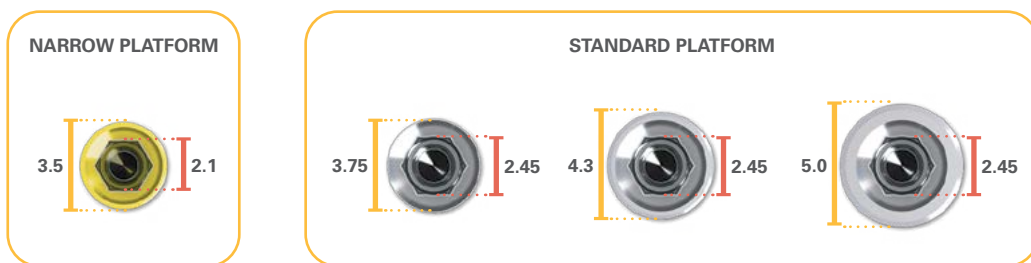
NUVO™ implants are treated with the well documented sandblasting and acid etched surface treatment, resulting from a highly controlled and validated process.

Simple

Simple as it should be, **NUVO™ InternalFIT™** features a color-coded and simplified prosthetic platform, adding ease of use with only one screwdriver for the entire system.

Simplified Prosthetic Platforms

The well-established Internal Hex connection is made even simpler, by covering all demanding indication with 2 prosthetic platforms:



Color Coded System

The **NUVO™ InternalFIT™** has a color-coded system, which allows an intuitive implant/abutment identification and selection, by featuring a color coded prosthetic implant platform and abutment.



One Screwdriver

Reducing complexity on prosthetic handling, **NUVO™ InternalFIT™** allows working on all screws by using one screwdriver.





Versatile

The **NUVO™** implant system enables versatility by offering an apically tapered implant design, designed to cover all mouth regions with numerous implant dimension options. The versatile restorative options are designed to restore even the most demanding indications with a comprehensive prosthetic portfolio.

Tapered Implant Design

NUVO™ Implant System features a bone level apically tapered design, maximizing treatment options and efficiency regardless of the bone density.

Comprehensive Implant Portfolio

NUVO™ Implants are designed for all indications, by offering a full range of diameters and lengths.

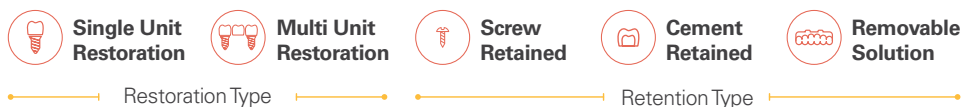


Comprehensive Prosthetic Portfolio

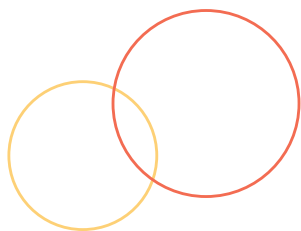
NUVO™ InternalFIT™ implants offer a comprehensive prosthetic portfolio designed to meet the patient's needed treatment:

- **Indication Type:** From single to edentulous;
- **Retention Type:** From screw to cement retained;
- **Workflow Type:** From conventional to digital.

<p>Cement Retained Abutment</p>	<p>Cement Retained Abutment Angled</p>	<p>Multi Unit Screw Retained Abutment</p>	<p>Titanium Base Abutment</p>
<p>UCLA Abutment</p>	<p>Pre Milled Abutment Blank</p>	<p>Attachment Removable Prosthesis</p>	<p>Titanium Temporary Abutment</p>



RETENTION TYPE	PROSTHETIC OPTION	ABUTMENT SELECTION	IMPRESSION / SCANNING
CEMENT & SCREW-RETAINED PROSTHESIS	Titanium Base	<p>Crown</p> <p>NP: Ø 3.5 GH. 0.5 GH. 1.0 GH. 3.0 spare screw</p> <p>SP: Ø 4.5 CD3502007 CD3502008 CD3502009 CD1602001 CD1602002</p> <p>Ø 5.5 CD3502013 CD3502014 CD3502015</p> <p>Cementable Height: 6.0 (customization is allowed for 4 mm).</p>	<p>LAB SCANNING</p> <p>OPEN TRAY NP: CD0802001 SP: CD0802002 10 N.cm. 1</p> <p>CLOSED TRAY NP: CD0802005 SP: CD0802006 10 N.cm. 1</p> <p>INTRAORAL SCANNING</p> <p>Implant Scanbody NP: CD0802005 SP: CD0802006 10 N.cm. 1</p>
		<p>Bridge</p> <p>NP: Ø 3.5 GH. 0.5 GH. 1.0 GH. 3.0 spare screw</p> <p>SP: Ø 4.5 CD3502010 CD3502011 CD3502012 CD1602001 CD1602002</p> <p>Ø 5.5 CD3502016 CD3502017 CD3502018</p> <p>Cementable Height: 4.5 mm.</p>	<p>LAB SCANNING</p> <p>OPEN TRAY NP: CD0802003 SP: CD0802004 10 N.cm. 1</p> <p>INTRAORAL SCANNING</p> <p>Implant Scanbody NP: CD0802003 SP: CD0802004 10 N.cm. 1</p>
	Pre Milled Abutment Titan. Blank/ Medentika Holder	<p>SINGLE</p> <p>NP: Ø 11.5 spare screw</p> <p>SP: CD3702003 CD1602002</p> <p>20 N.cm. 1</p>	<p>LAB SCANNING</p> <p>OPEN TRAY NP: CD0802001 SP: CD0802002 10 N.cm. 1</p> <p>CLOSED TRAY NP: CD0802005 SP: CD0802006 10 N.cm. 1</p> <p>INTRAORAL SCANNING</p> <p>Implant Scanbody NP: CD0802005 SP: CD0802006 10 N.cm. 1</p>
	UCLA Abutment	<p>Crown</p> <p>NP: Ø 3.5 CASTABLE GH. 1.0 COCR GH. 1.0 spare screw</p> <p>SP: Ø 4.5 CD2202001 CD2202002 CD1602001 CD1602002</p> <p>Ø 5.5 CD2202003 CD2202009</p> <p>*with 5 units</p>	<p>Implant Impression Post Crown</p> <p>OPEN TRAY NP: CD0802001 SP: CD0802002 10 N.cm. 1</p> <p>CLOSED TRAY NP: CD0802005 SP: CD0802006 10 N.cm. 1</p>
	<p>Bridge</p> <p>NP: Ø 3.5 CASTABLE GH. 1.0 COCR GH. 1.0 CASTABLE GH. 1.0 / Pack* COCR GH. 1.0 / Pack* spare screw</p> <p>SP: Ø 4.5 CD2202002 CD2202008 CD2202014 CD2202020 CD1602001 CD1602002</p> <p>Ø 5.5 CD2202004 CD2202010 CD2202016 CD2202022 CD1602002</p> <p>Ø 5.5 CD2202006 CD2202012 CD2202018 CD2202024</p> <p>*with 5 units</p>	<p>Implant Impression Post Bridge</p> <p>OPEN TRAY NP: CD0802003 SP: CD0802004 10 N.cm. 1</p>	
CEMENT-RETAINED PROSTHESIS	Cement Retained Abutment	<p>SINGLE</p> <p>NP: GH. 1.5 GH. 3.0 GH. 2.0 GH. 3.0 spare screw</p> <p>SP: CD1402005 CD1402006 CD1402007 CD1402008 CD1602001 CD1602002</p> <p>CD1402013 CD1402014 CD1402015 CD1402016</p> <p>20 N.cm. 1</p>	<p>Implant Impression Post Crown</p> <p>OPEN TRAY NP: CD0802001 SP: CD0802002 10 N.cm. 1</p> <p>CLOSED TRAY NP: CD0802005 SP: CD0802006 10 N.cm. 1</p>
		<p>SINGLE & MULTI</p> <p>NP: Ø 3.5 GH. 0.5 GH. 1.0 GH. 2.0 GH. 3.0 spare screw</p> <p>SP: Ø 4.5 CD1402001 CD1402002 CD1402003 CD1402004 CD1602001 CD1602002</p> <p>CD1402009 CD1402010 CD1402011 CD1402012</p> <p>20 N.cm. 1</p>	<p>Implant Impression Post Crown</p> <p>OPEN TRAY NP: CD0802001 SP: CD0802002 10 N.cm. 1</p> <p>CLOSED TRAY NP: CD0802005 SP: CD0802006 10 N.cm. 1</p>
SCREW-RETAINED PROSTHESIS	Multi Unit Screw Retained Abutment	<p>MULTI</p> <p>NP: Ø 4.8 GH. 1.0 GH. 2.0 GH. 3.0</p> <p>SP: Ø 4.8 CD1502005 CD1502006 CD1502007 CD1502016 CD1502017 CD1502018</p> <p>NP: Ø 4.8 GH. 4.0 GH. 5.0</p> <p>SP: Ø 4.8 CD1502008 CD1502009 CD1502019 CD1502020</p> <p>20 N.cm. 2</p>	<p>Multi unit Screw retained Abutment Impression Post</p> <p>OPEN TRAY NP: Ø 4.8 CD0806003 SP: CD1606001 10 N.cm. 1</p> <p>CLOSED TRAY NP: Ø 4.8 CD0806001 SP: CD1606002 10 N.cm. 3</p>
		<p>MULTI</p> <p>NP: Ø 4.8 GH. 2.3 GH. 3.0 GH. 4.0 spare screw</p> <p>SP: Ø 4.8 CD1502010 CD1502011 CD1502012 CD1606001 CD1606002</p> <p>CD1502021 CD1502022 CD1502023</p> <p>NP: Ø 4.8 GH. 3.0 GH. 4.0 GH. 5.0</p> <p>SP: Ø 4.8 CD1502013 CD1502014 CD1502015 CD1606002</p> <p>CD1502024 CD1502025 CD1502026</p> <p>20 N.cm. 1</p>	<p>Multi unit Screw retained Abutment Scanbody</p> <p>Ø 4.8 CD1106001 10 N.cm. 1</p>



PROVISIONAL RESTORATION

MODEL

FINAL RESTORATION

DRIVERS

CD1102001
CD1102002

Titanium Temporary Abutment Crown 20 N.cm. 1

GH. 1.0
NP | Ø 3.5 | CD1302001 | spare screw NP | CD1602001
SP | Ø 4.5 | CD1302003 | CD1602002
Ø 5.5 | CD1302005 | CD1602002

Titanium Temporary Abutment Bridge 20 N.cm. 1

GH. 1.0
NP | Ø 3.5 | CD1302002 | spare screw NP | CD1602001
SP | Ø 4.5 | CD1302004 | CD1602002
Ø 5.5 | CD1302006 | CD1602002

CD1102001
CD1102002

Titanium Temporary Abutment Crown 20 N.cm. 1

GH. 1.0
NP | Ø 3.5 | CD1302001 | spare screw NP | CD1602001
SP | Ø 4.5 | CD1302003 | CD1602002
Ø 5.5 | CD1302005 | CD1602002

Titanium Temporary Abutment Crown 20 N.cm. 1

GH. 1.0
NP | Ø 3.5 | CD1302001 | spare screw NP | CD1602001
SP | Ø 4.5 | CD1302003 | CD1602002
Ø 5.5 | CD1302005 | CD1602002

Titanium Temporary Abutment Bridge 20 N.cm. 1

GH. 1.0
NP | Ø 3.5 | CD1302002 | spare screw NP | CD1602001
SP | Ø 4.5 | CD1302004 | CD1602002
Ø 5.5 | CD1302006 | CD1602002

Titanium Temporary Abutment Crown 20 N.cm. 1

GH. 1.0
NP | Ø 3.5 | CD1302001 | spare screw NP | CD1602001
SP | Ø 4.5 | CD1302003 | CD1602002
Ø 5.5 | CD1302005 | CD1602002

(temporary implant level)

Protection Cylinder for Multi unit Screw Retained Abutment 10 N.cm. 1

Ø 4.8 CD0606001

Titanium Coping Multi unit Screw Retained Abutment 10 N.cm. 1

Ø 4.8 CD1806005

spare screw CD1614001

Multi Unit Screw Retained Abutment Polishing Protector Ø 4.8 CD2306001

LAB SCANNING / CONVENTIONAL MODEL

Implant Analog NP | CD0102001
SP | CD0102002

Implant Scanbody 10 N.cm. 1 NP | CD1102001
SP | CD1102002

(Model scanning)

PRINTED MODEL

Implant Analog NP | CD0102001
SP | CD0102002

Implant Analog NP | CD0102001
SP | CD0102002

Multi unit Screw Retained Abutment Analog

Ø 4.8 CD0106001

20 N.cm. 1

20 N.cm. 1

20 N.cm. 1

20 N.cm. 1

20 N.cm. 1

20 N.cm. 1

20 N.cm. 1

Cement Retained Castable Coping 10 N.cm. 1

CASTABLE NP | Ø 3.5 | CD1808001
SP | Ø 4.5 | CD1808003

Coping Multi unit Screw Retained Abut. 10 N.cm. 1

Ø 4.8 CD1806001 CASTABLE
Ø 4.8 CD1806003 COCR
CD1614001 spare screw

Trocar o nome para Multi Unit Screw Retained Abut. Ø 4.8 Polishing Protector CD2306001

One Step Hybrid Coping 10 N.cm. 1

Ø 4.8 CD1829002

One step hybrid lab screw CD1629001

Multi Unit Screw Retained Abutment Polishing Protector Ø 4.8 CD2306001



IMPLANT DIAMETER X LENGTH (MM)		SURGICAL INSTRUMENTS																			
		INITIAL	TAPERED 2.0	DIRECTION INDICATOR	TAPERED 3.5	TAPERED 3.5 +	COUNTERSINK 3.5	TAPERED 3.75	TAPERED 3.75 +	COUNTERSINK 3.75	TAPERED 4.3	TAPERED 4.3 +	COUNTERSINK 4.3	TAPERED 5.0	TAPERED 5.0 +	COUNTERSINK 5.0	IF IMPLANT DRIVER NP	IF IMPLANT DRIVER SP			
Ø 3.5	7mm	REGULAR CD0324021	REGULAR CD0324022	REGULAR CD0324023	REGULAR CD0324024	REGULAR CD0324025	SHORT CD0324032	SHORT CD0324034	SHORT CD0324036	SHORT CD0324038	LONG CD0324037	LONG CD0324028	LONG CD0326013	LONG CD0324039	LONG CD0324029	LONG CD0326014	LONG CD0422004	LONG CD0422005			
	10mm	NP CD0902001	NP CD0902002	NP CD0902003	NP CD0902004	NP CD0902005	NP CD0902006	NP CD0902007	NP CD0902008	NP CD0902009	NP CD0902010	NP CD0902011	NP CD0902012	NP CD0902013	NP CD0902014	NP CD0902015	NP CD0902016	NP CD0902017	NP CD0902018		
	11.5mm	SP CD0902007	SP CD0902008	SP CD0902009	SP CD0902010	SP CD0902011	SP CD0902012	SP CD0902013	SP CD0902014	SP CD0902015	SP CD0902016	SP CD0902017	SP CD0902018	SP CD0902019	SP CD0902020	SP CD0902021	SP CD0902022	SP CD0902023	SP CD0902024	SP CD0902025	
	13mm	SP CD0902013	SP CD0902014	SP CD0902015	SP CD0902016	SP CD0902017	SP CD0902018	SP CD0902019	SP CD0902020	SP CD0902021	SP CD0902022	SP CD0902023	SP CD0902024	SP CD0902025	SP CD0902026	SP CD0902027	SP CD0902028	SP CD0902029	SP CD0902030	SP CD0902031	SP CD0902032
	16mm	SP CD0902019	SP CD0902020	SP CD0902021	SP CD0902022	SP CD0902023	SP CD0902024	SP CD0902025	SP CD0902026	SP CD0902027	SP CD0902028	SP CD0902029	SP CD0902030	SP CD0902031	SP CD0902032	SP CD0902033	SP CD0902034	SP CD0902035	SP CD0902036	SP CD0902037	SP CD0902038
18mm	SP CD0902023	SP CD0902024	SP CD0902025	SP CD0902026	SP CD0902027	SP CD0902028	SP CD0902029	SP CD0902030	SP CD0902031	SP CD0902032	SP CD0902033	SP CD0902034	SP CD0902035	SP CD0902036	SP CD0902037	SP CD0902038	SP CD0902039	SP CD0902040	SP CD0902041	SP CD0902042	SP CD0902043

SURGICAL COMPONENTS

Cover Screw
 NP CD1702001
 SP CD1702002
 10 N.cm

Healing Abutment
 GH. 1.0 CD0602001
 GH. 3.0 CD0602002
 GH. 5.0 CD0602003
 NP Ø 3.5
 NP Ø 4.5
 NP Ø 5.5
 SP CD0602004
 SP CD0602005
 SP CD0602006
 SP CD0602007
 SP CD0602008
 SP CD0602009
 10 N.cm

Driver: Screwdriver Hex 1.2

SURGICAL INSTRUMENTS

Drill Extender
 CD0312001 S

Angle Measurer for Drill 2.0
 17° CD2818011
 30° CD2818012

Depth Probe
 CD2911002 S

Bone Profile Drill
 NP CD0327004
 SP CD0327005

Implant Driver for Hand piece
 Implant pick up and initial placement
 NP CD0422004 S
 SP CD0422005 S

Implant Driver for Ratchet
 Torque applying
 SHORT NP CD0420007 S
 LONG NP CD0420008 S
 SP CD0420009 S
 SP CD0420010 S

Manual Screwdriver 1.2
 SHORT CD0521001
 REGULAR CD0521003 S
 LONG CD0521002

Tapered Implant X-Ray Positioner
 Ø 3.5 CD2917001
 Ø 3.75 CD2917002
 Ø 4.3 CD2917003
 Ø 5.0 CD2917004

PROSTHETIC INSTRUMENTS

Angle Measurer
 17° NP CD2818009
 30° NP CD2818007
 SP CD2818008
 SP CD2818010

Screw Driver Hex 1.2 for Hand Piece
 SHORT CD0522003
 LONG CD0522004

Screw Driver Hex 1.2 for Ratchet
 SHORT CD0520002 P
 REGULAR CD0520003 P
 LONG CD0520004 P

Abutment Driver/ Multi Unit Screw Retained Abut.
 SHORT CD0520008 P
 REGULAR CD0520007 P

Impression post driver
 CD0521006 P

AUXILIARY INSTRUMENTS

Torque Wrench / Ratchet
 CD2920001 S P

Adapter - Ratchet to Manual
 CD0521005 P

Adapter - Hand Piece to Manual
 CD0521004 S

DRILL STOPS

Implant length 7.0 mm	Ø 2.0	CD0330000	Implant length 8.0 mm	Ø 2.0	CD0330001	Implant length 10.0 mm	Ø 2.0	CD0330002	Implant length 11.5 mm	Ø 2.0	CD0330003	Implant length 13.0 mm	Ø 2.0	CD0330004
	Ø 3.5	CD0330005		Ø 3.5	CD0330006		Ø 3.5	CD0330007		Ø 3.5	CD0330008			
	Ø 3.75 / 4.0	CD0330010		Ø 3.75 / 4.0	CD0330011		Ø 3.75 / 4.0	CD0330012		Ø 3.75 / 4.0	CD0330013			
	Ø 4.3 / 5.0	CD0330015		Ø 4.3 / 5.0	CD0330016		Ø 4.3 / 5.0	CD0330017		Ø 4.3 / 5.0	CD0330018			

CASSETTES

Surgical Kit
 The items that compose the Surgical Cassette are marked with S

Prosthetic Cassette CD1001002
 The items that compose the Prosthetic Cassette are marked with P

Drill Stop

CD1002001 S Empty cassette
 CD1002002 Pre Mounted (30 items)

Items that compose the cassette are sold separately.

CD1030001 Pre Mounted (cassette + 5 holders + 20 stops)
 CD1030002 Kit (Empty cassette + 5 holders)
 CD1031001 Holder (1 unit)



NOTES

A series of horizontal dotted lines for writing notes, spanning the width of the page.

Straumann® XenoGraft

Mastering everyday cases.

Versatile solutions for successful bone and tissue regeneration.

Following the well-established treatment protocol using demineralized bovine bone granules for the efficient treatment of bone defects.



Straumann® XenoGraft, for bone defect treatment, is methodically processed from bovine bone, extensively tested to eliminate antigenicity and provides a favorable environment for new bone growth. Its limited resorption rate delivers extended stability, a critical advantage in cases that require a strong framework for long-term tissue support or esthetic needs.

WHY STRAUMANN® XENOGRAFT?

- Volume preservation by providing a long lasting framework for **excellent space maintenance**
- Fast and straightforward application for **optimal handling**
- Innovative packaging for **easy product handling** and hydration
- Limited resorption rate provides **extended stability**
- Osteoconduction followed by organized integration and remodeling process
- Extended portfolio range

Straumann® XenoGraft is available in the following options

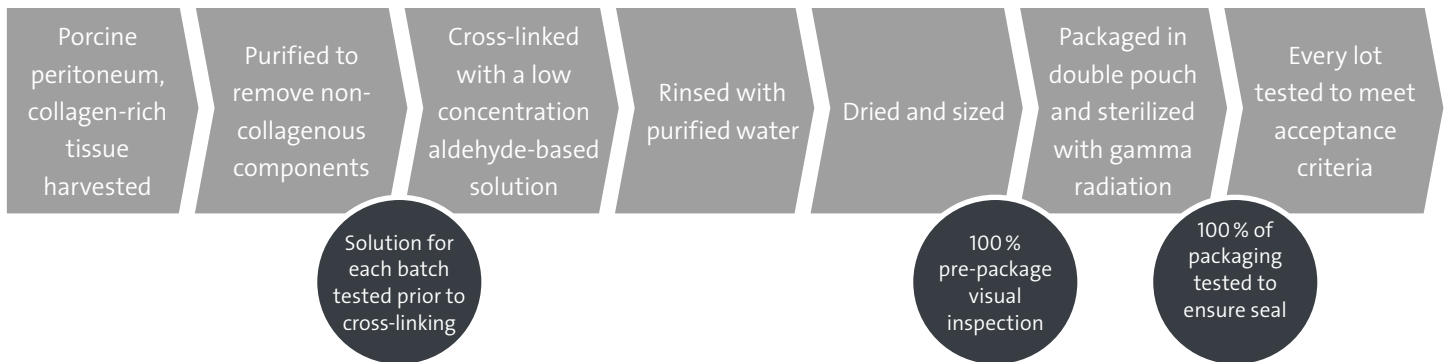
Order code	Volume (g/cc)	Granules Size (mm)	Product
S1-0210-025	0.25 g/0.55 cc	0.2–1.0 mm	Straumann® XenoGraft granules in bowl-type glass vial
S1-0210-050	0.5 g/1.3 cc		
S1-0210-100	1.0 g/2.4 cc		
S1-0210-200	2.0 g/4.5 cc		
S1-1020-025	0.25 g/0.68 cc	1.0–2.0 mm	Straumann® XenoGraft granules in bowl-type glass vial
S1-1020-050	0.5 g/1.55 cc		
S1-1020-100	1.0 g/2.9 cc		
S1-1020-200	2.0 g/5.0 cc		



Straumann® Membrane Flex™

Membrane Flex™ provides flexibility and strength in an easy-to-handle, easy-to-suture barrier for soft tissue support and graft containment. Meticulously manufactured from highly purified intact porcine collagen and minimally crosslinked, it's biocompatible and predictably resorbable. It naturally conforms to defects and contours – plus, it's easy to reposition. Once in place, it can be firmly anchored to surrounding tissue with minimal risk of tearing or detachment, thanks to its high suture pullout strength.*

PROCESSING ASSURES COMPATIBILITY



Available in the following sizes

Code	Description
070.008	Straumann® Membrane Flex™ 15 × 20 mm
070.009	Straumann® Membrane Flex™ 20 × 30 mm
070.010	Straumann® Membrane Flex™ 30 × 40 mm



תמיד לשירותך

משפחת ה.א. שיטות

מנהלי תיקי לקוחות



ינון כהן-נחמיה

050-6451880

אזור ירושלים ודרום



אורי חמישה

054-3328791

אזור דרום וירושלים



דנה גולד

054-6210892

אזור מרכז



ישי מינס

055-8873619

אזור מרכז



גלית סבג הוניג

054-3063409

אזור צפון

מטה מכירות משרד (שתלים + רגנרציה)



שולי נער

03-6138777

054-2525435

אזור דרום וירושלים



נמלי רינק

03-6138777

054-3196860

אזור מרכז



רינת גורביץ

03-6138777

054-9094420

אזור מרכז



מאיה פנחס

03-6138777

054-2515271

אזור צפון

תמיכה מקצועית



טוניה גיצ'ק

03-6138777

פרטנמית גבייה והנה"ח



דריה ברל

050-9022467

מנהלת ידע ורגולציה



יעקב יוסופוב

054-2525419

תומך מעבדות שיניים

ושיקום ע"ג שתלים